

**PAX<sup>®</sup>**

locking plate system

catalog



**Securos Surgical<sup>®</sup>**  
AmerisourceBergen

# 02 Securos Surgical® PAX® locking plate system

## Who is Securos Surgical?

Securos is an innovator of practical solutions for veterinary surgeons. We specialize in orthopedics, but further equip the surgical suite by offering quality daily-use items including surgical instruments and suture.

## What makes us different? Why should you do business with us?

You can trust us for innovation, quality, and value. And, as important as the products we bring to market, we deliver these products with the industry's most personalized service.

- Customer-focused in every aspect of what we do and every decision we make
- Problem-solving and inviting of collaboration with our customers to solve those problems
- Experts in our domain, but humble enough to constantly seek feedback
- Clear in our commitment to practical innovation, quality, value, and service
- Rooted in the day-to-day reality of veterinary surgeons and general practitioners



## Orthopedics

Developed from the insights of practicing veterinary surgeons

## Instruments

Performance you can feel the moment each instrument reaches your hand

## Sutures

Premium quality at price points that drive your success

## Ordering process and support

- USA** To order a PAX locking plate system, please use **mwiah.com**. For support: please call Securos Surgical at 877.266.3349, and choose option #2 for a Securos Technical Support representative or email: [securossales@mwiah.com](mailto:securossales@mwiah.com). You will receive an invoice from MWI Animal Health for your order.
- UK** Securos Surgical UK Office (England)  
Sales and support contact: +07891 539 282  
or email: [sales@securos.co.uk](mailto:sales@securos.co.uk)  
Clare Potts  
Securos Surgical UK  
Business Manager
- Europe** Securos Surgical Europe Office (Germany)  
Sales and support contact: +49 7467 947650  
or email: [info@securos-europe.eu](mailto:info@securos-europe.eu)  
Michel Wipperling, MBA  
Securos Surgical  
International Sales Director

## Contents

- 04** PAX locking plating system
- 05** Polyaxial system
- 06** Mini plate system 1.5mm
- 10** Mini plate system 2.0/2.4mm
- 18** Small plate system 2.7/3.5mm
- 25** Plate bending pliers
- 26** Specialty plates
- 30** TPLO plates
- 33** OrthoHelp
- 34** Reference charts

# PAX locking plate system

Plates, screws, and instruments

## System overview

The PAX polyaxial locking system is a comprehensive anatomical bone plating set consisting of 1.5, 2.0, 2.4, 2.7, and 3.5mm titanium plates with polyaxial locking screws.

## Features and benefits

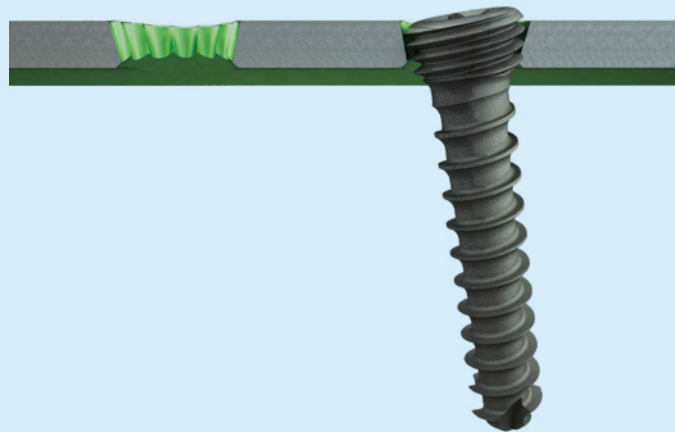
Feature		Benefit
<b>Polyaxial locking screws</b>	Angularly stable screw-plate locking system offers polyaxial insertion of screws into the plate at angles of $\pm 10^\circ$	Screws can be angled to avoid joint spaces, anatomic structures and ancillary implants.
<b>Titanium and titanium alloy implants</b>	Offer supreme biocompatibility.	Minimal tissue reaction with potentially lower incidence of infection*.
<b>Novel locking system</b>	Conical screw head cuts threads in the plate during insertion; reliable for repeated insertions.	Locking system does not require bone/plate interface compression minimizing damage to the blood supply and periosteum, enhancing healing.
<b>Multiple plate geometries</b>	Trauma, Lengthening, Reconstruction, "T", "L", Contoured TPLO, A-A Luxation, DPO, TPO, and CCWO plates.	One versatile system handles most orthopedic trauma and reconstruction surgical procedures.
<b>Compression/locking plates</b>	One system allows for locking or compression plating.	Greater intraoperative versatility.
<b>Limited contact footprint</b>	Minimizes damage to the vascular elements and periosteum.	Improved healing.
<b>Taper tip</b>	Reduces surgical exposure when using straight plates.	Minimizes tissue trauma during sub-muscular plate insertion (MIPO).
<b>Interchangeable screw diameters</b>	Multiple screw diameters can be used in the same plate conforming to individual bony anatomy.	Versatility and flexibility of construct allows maximum anatomical reconstruction.

The benefits of the PAX titanium, polyaxial, locking, osteosynthesis system have been proven in thousands of cases since 2010.

\*Claus M, Graft S, Gersbach S, et al. Material and biofilm load of k wires in toe surgery: titanium versus stainless steel. Clin Orthop Rel Res. 2013;471(7): 2312-2317.

# Polyaxial system

Polyaxial screw  
insertion



Locking reconstruction  
plate (RP)



Radiograph on left by Fred Pike, DVM, DACVS

Radiograph on right by Joshua Jackson, DVM, DACVS

Locking limited contact  
straight plate (SP)



Radiograph by Charles M. Walls, DVM, DACVS



## Mini plate system 1.5mm

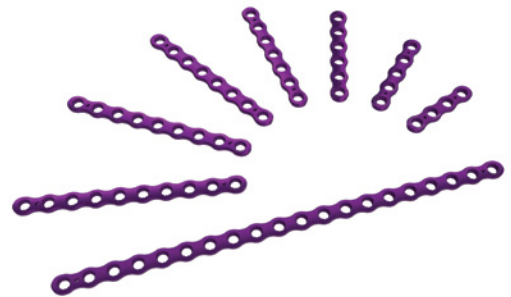
### 1.5mm locking reconstruction plates (RP)

Width: 5.2mm

Thickness: 1.5mm

Distance between center of holes: 6.0mm

Part #	# Of holes	Length (mm)
800024	4	24
800025	5	30
800026	6	36
800027	7	42
800028	8	48
800029	9	54
800030	10	60
800031	20	120



### 1.5mm locking lengthening plates (LP)

Width: 5.2mm

Thickness: 1.5mm

Distance between center of holes: 6.0mm

Part #	# Of holes	Distance between center holes (mm)	Length (mm)
800032	2/2	12	30
800033	2/2	18	36
800034	2/2	30	48
800035	3/3	24	54
800036	3/3	30	60
800037	3/3	36	66



## 1.5mm locking T plates

Head width: 11.2mm (2 hole), 15.9mm (3 hole)

Thickness: 1.5mm

Distance between center of holes: 6.0mm

Part #	# Of holes head	# Of holes shaft	Length (mm)
800046	2	4	30.5
800047	2	5	36.5
800048	3	4	30.5
800049	3	5	36.5



## 1.5mm locking oblique T plates

Head width: 12.1mm

Thickness: 1.5mm

Distance between center of holes: 6.0mm

Part #	# Of holes head	Direction	Length (mm)
800044	6	Left	31.6
800042	6	Right	31.6
800045	7	Left	37.6
800043	7	Right	37.6



## 1.5mm locking L plates

Head width: 11.2mm

Thickness: 1.5mm

Distance between center of holes: 6.0mm

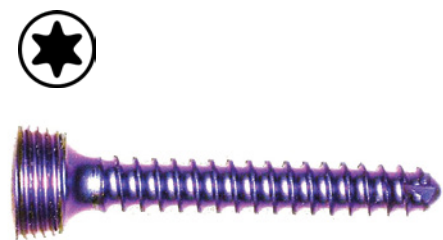
Part #	# Of holes head	Direction	Length (mm)
800040	6	Left	29.6
800038	6	Right	29.6
800041	7	Left	35.6
800039	7	Right	35.6



1.5mm locking screw,  
self-tapping, star recess

Diameter of thread: 1.5mm  
Diameter of head: 3.0mm  
Drill bit for threaded hole: 1.1mm  
For use with T6 stardrive screwdriver

Part #	Length (mm)	Part #	Length (mm)
800003	4	800011	12
800004	5	800012	13
800005	6	800013	14
800006	7	800014	15
800007	8	800015	16
800008	9	800016	18
800009	10	800017	20
800010	11		



PAX 1.5mm locking plate tray

Part #	Description
800001	1.5mm PAX locking plate tray
800002	1.5mm PAX full tray cover



PAX 1.5mm locking instruments

Part #	Description
800018	1.1mm PAX neutral/load drill guide
029008	1.1mm QC drill bit for 1.5mm screws
800020	Silicone screwdriver handle – QC
042389	PAX plate holding forceps
042392	1.5/2.0/2.4 PAX depth gauge
042387	T6 stardrive screwdriver shaft for 1.5/2.0/2.4mm PAX screws

Implants and instruments  
are not included with tray.





Radiograph provided by:  
Duncan Midgley, BVMS, CERTSAO, MRCVS



## 10

## Mini plate system 2.0/2.4mm

2.0mm locking limited  
contact straight plates (SP)

Width: 6.0mm

Thickness: 1.5mm

Distance between center of holes: 6.0mm

Part #	# Of holes	Length (mm)
049587	5	34
049588	6	40
049589	7	46
049590	8	52
049591	9	58
049592	10	64
049593	20	128

2.4mm locking limited  
contact straight plates (SP)

Width: 8.0mm

Thickness: 2.0mm

Distance between center of holes: 7.5mm

Part #	# Of holes	Length (mm)
049596	5	42
049597	6	49
049598	7	57
049599	8	64
049600	9	72
049601	10	79
049602	12	94
049603	14	109
049604	20	154





## 2.0/2.4mm locking limited contact straight plates (SP) tray

Part #	Description
051703	2.0/2.4mm locking limited contact straight plate tray
051707	2.0/2.4mm PAX half tray cover

Implants are not included with tray.



PAX 2.0/2.4mm Limited Contact and Reconstruction plate k-wire holes will only fit the .035" k-wires.



2.0mm locking  
reconstruction plates (RP)

Width: 6.0mm  
Thickness: 1.5mm  
Distance between center of holes: 6.0mm

Part #	# Of holes	Length (mm)
045529	3	18
042171	4	24
042173	5	30
042174	6	36
042175	7	42
042176	8	48
042178	9	54
044622	10	60
066035	20	120



2.4mm locking  
reconstruction plates (RP)

Width: 8.0mm  
Thickness: 2.0mm  
Distance between center of holes: 7.5mm

Part #	# Of holes	Length (mm)
044626	4	30
042179	5	37.5
042181	6	45
044627	7	52.5
042182	8	60
042183	9	67.5
044623	10	75
044624	12	90
044625	14	105



## 2.0mm locking T-plates

Head width: 12.0mm

Thickness: 1.5mm

Distance between center of holes: 6.0mm

Part #	# Of holes head	# Of holes shaft	Length (mm)
042184	2	2	18
042185	2	3	24
042186	2	4	30
042187	2	5	36
042188	2	6	42
042189	2	7	48



## 2.4mm locking T-plates

Head Width: 15.0mm

Thickness: 2.0mm

Distance between center of holes: 7.5mm

Part #	# Of holes head	# Of holes shaft	Length (mm)
044628	2	2	22.5
044629	2	3	30
044630	2	4	37.5
044631	2	5	45
044632	2	6	52.5
044633	2	7	60



## 2.0/2.4mm locking reconstruction plate (RP) tray

Part #	Description
042385	2.0/2.4mm locking reconstruction plate tray
042386	2.0/2.4mm PAX full tray cover, pack of 2

Implants and instruments are not included with tray.

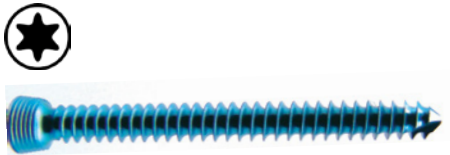


PAX 2.0/2.4mm Limited Contact and Reconstruction plate k-wire holes will only fit the .035" k-wires.

2.0mm locking screw,  
self-tapping, star recess

Diameter of thread 2.0mm  
Diameter of head: 3.0mm  
Drill bit for threaded hole: 1.3mm  
For use with T6 stardrive screwdriver

Part #	Length (mm)
042190	6
042191	8
042192	10
042193	12
042194	14
042195	16
042196	18
042197	20



2.4mm locking screw,  
self-tapping, star recess

Diameter of thread 2.4mm  
Diameter of head: 3.0mm  
Drill bit for threaded hole: 1.7mm  
For use with T6 stardrive screwdriver

Part #	Length (mm)
042198	6
042199	8
042337	10
042342	12
042343	14
042344	16
042346	18
042348	20
042349	22
042350	24



## 2.0/2.4mm locking screw rack

Part #	Description
<b>051701</b>	2.0/2.4mm PAX screw rack
<b>051707</b>	2.0/2.4mm PAX screw tray cover

Implants are not included with tray.



## 2.0/2.4mm locking instrument tray

Part #	Description
<b>051706</b>	2.0/2.4mm PAX instrument tray
<b>042386</b>	2.0/2.4mm PAX full tray cover, pack of 2
<b>029529</b>	Screwdriver QC handle
<b>042387</b>	T6 stardrive screwdriver shaft for 2.0/2.4mm PAX screws
<b>042389</b>	PAX plate holding forceps
<b>029009</b>	1.5mm QC drill bit for 2.0mm PAX screws
<b>115706</b>	1.8mm QC drill bit for 2.4mm PAX screws
<b>042392</b>	1.5/2.0/2.4mm PAX depth gauge
<b>112621</b>	2.0mm PAX neutral/load drill guide
<b>112620</b>	2.4mm PAX neutral/load drill guide

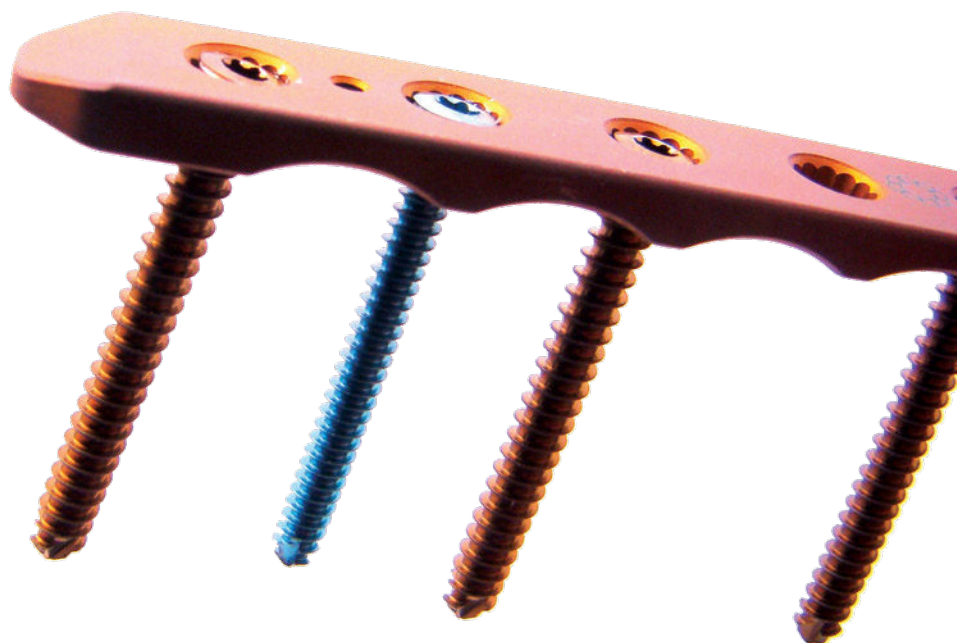
### Optional instruments

<b>065978</b>	PAX RP plate bending plier 2.0/2.4/2.7/3.5mm
<b>112619</b>	1.5/1.8mm PAX double drill guide
<b>370112</b>	Articulated tensioning device (special order)

Instruments are not included with tray.











## Small plate system 2.7/3.5mm

### 2.7mm locking limited contact straight plates (SP)

Width: 8.5mm

Thickness: 2.5mm

Distance between center of holes: 9.0mm

Part #	# Of holes	Length (mm)	Part #	# Of holes	Length (mm)
045204	4	39	044948	9	84
044944	5	48	044949	10	93
044945	6	57	044899	12	111
044946	7	66	044950	14	129
044947	8	75	044951	16	147



### 3.5mm locking limited contact straight plates (SP)

Width: 11.0mm

Thickness: 3.2mm

Distance between center of holes: 12.0mm

Part #	# Of holes	Length (mm)	Part #	# Of holes	Length (mm)
045530	4	50	055056	12	146
044955	5	62	048381	13	158
045531	6	74	045201	14	170
044942	7	86	044943	15	182
045556	8	98	048179	16	192
045199	9	110	045202	18	218
045060	10	122	045203	20	242
045200	11	134			

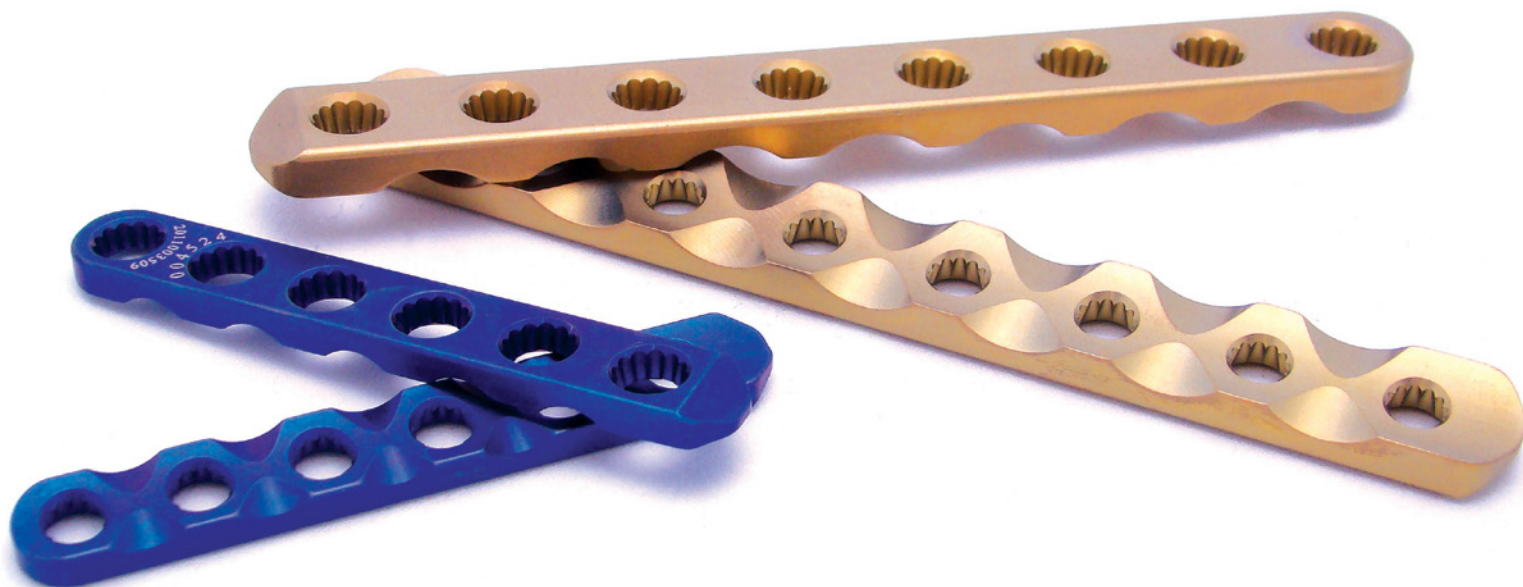




## 2.7/3.5mm locking contact straight plate (SP) tray

Part #	Description
051705	3.5mm PAX locking limited contact straight plate tray
051704	2.7mm PAX straight plate insert (inserts into 051705)
042352	PAX straight plate tray cover, pack of 2

Implants are not included with tray.



PAX 2.7/3.5mm Limited Contact and Reconstruction plate k-wire holes will only fit the .045" k-wires.

2.7mm locking  
reconstruction plates (RP)

Width: 9.5mm  
Thickness: 2.5mm  
Distance between center of holes: 9.0mm

Part #	# Of holes	Length (mm)
044638	4	36
044639	5	45
044641	6	54
044642	7	63
042306	8	72
044643	9	81
044634	10	90
044635	12	108
044636	14	126
044637	16	144



3.5mm locking  
reconstruction plates (RP)

Width: 12.0mm  
Thickness: 3.2mm  
Distance between center of holes: 11.0mm

Part #	# Of holes	Length (mm)	Part #	# Of holes	Length (mm)
042244	4	44	044650	11	121
044656	5	55	044651	12	132
042245	6	66	044652	14	154
044657	7	77	044653	15	165
042246	8	88	044654	16	176
044658	9	99	044952	18	198
042247	10	110	044655	20	220



## 2.7mm locking T-plates

Head width: 19mm

Thickness: 2.5mm

Distance between center of holes: 9.0mm

Part #	# Of holes head	# Of holes shaft	Length (mm)
066017	2	5	54
066018	2	7	72
066019	2	9	90



## 3.5mm locking T-plates

Head width: 22mm

Thickness: 3.2mm

Distance between center of holes: 11.0mm

Part #	# Of holes head	# Of holes shaft	Length (mm)
066020	2	5	66
066021	2	7	88
066022	2	9	110



2.7mm locking  
reconstruction plate (RP) tray

Part #	Description
042351	2.7mm PAX RP tray
042122	2.7mm PAX RP tray screw insert
042352	PAX tray cover, pack of 2

Implants and instruments are not included with tray.



3.5mm locking  
reconstruction plate (RP) tray

Part #	Description
042121	3.5mm PAX RP tray
042123	3.5mm PAX RP tray screw insert
042352	PAX tray cover, pack of 2

Implants are not included with tray.



## 2.7mm PAX locking screw, self-tapping, star recess

Diameter of thread 2.7mm

Diameter of head: 5.0mm

Drill bit for threaded hole: 2.0mm

For use with T15 stardrive screwdriver

Part #	Length (mm)
042279	8
042280	10
042281	12
042282	14
042283	16
042284	18
042285	20
042286	22
042287	24
042288	26

Part #	Length (mm)
042289	28
042290	30
042291	32
044644	34
044645	36
044646	38
044647	40
044648	45
044649	50



## 3.5mm PAX locking screw, self-tapping, star recess

Diameter of thread 3.5mm

Diameter of head: 5.0mm

Drill bit for threaded hole: 2.5mm

For use with T15 stardrive screwdriver

Part #	Length (mm)
042356	8
042357	10
042359	12
042361	14
042364	16
042366	18
042368	20
042369	22
044659	24
042100	26
042105	28
042106	30
042107	32

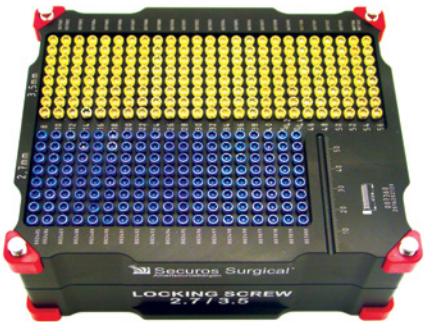
Part #	Length (mm)
042108	34
042109	36
042111	38
042112	40
042113	42
042114	44
042115	46
042116	48
042117	50
042118	52
042119	54
042120	56



2.7/3.5mm locking  
screw rack

Part #	Description
090011	2.7/3.5mm PAX screw rack
051948	2.7/3.5mm PAX half tray cover

Implants not included with tray.



2.7/3.5mm locking  
instrument tray

Part #	Description
051702	2.7/3.5mm PAX instrument tray
042352	PAX Tray cover, pack of 2
029529	Screwdriver QC handle
042353	T15 stardrive screwdriver shaft, for 2.7 & 3.5mm PAX screws
042389	PAX plate holding forceps
029010	2.0mm QC drill bit for PAX 2.7mm screws
029011	2.5mm QC drill bit for PAX 3.5mm screws
042355	2.7/3.5mm PAX depth gauge
051988	2.7mm PAX neutral/load drill guide
051989	3.5mm PAX neutral/load drill guide



Optional instruments

029528	Screwdriver large QC handle (pear-shaped)* for 2.7/3.5mm screw driver shafts
065978	PAX RP plate bending pliers 2.0/2.4/2.7/3.5mm
042354	2.7/3.5mm PAX double drill guide
370112	Articulated tensioning device (special order)

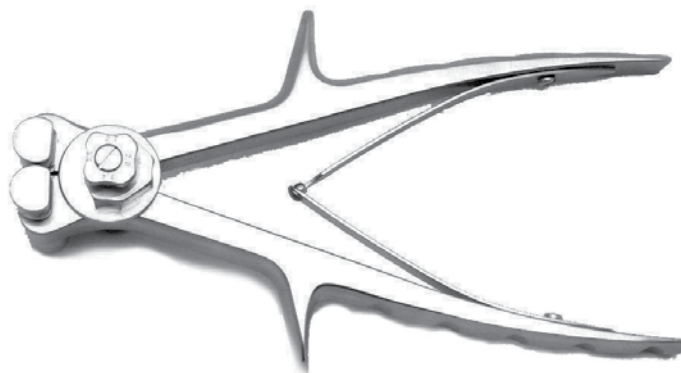
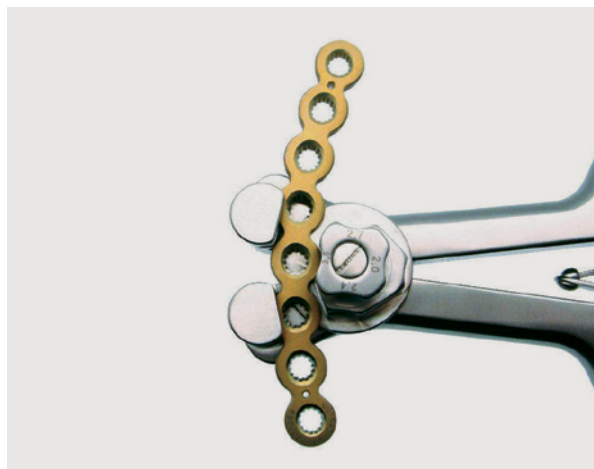
Instruments not included with tray.

\*Item sterilized separately from tray.



# PAX reconstruction plate bending pliers

Part #	Length (mm)
065978	PAX reconstruction plate bending pliers for 2.0/2.4/2.7/3.5mm RP plates



## Why use plate bending pliers?

The PAX reconstruction bending plier is an easy to use, all in one surgical instrument that allows for contouring of the 2.0, 2.4, 2.7, and 3.5mm size PAX reconstruction style locking plates. It has the capacity to bend the PAX reconstruction plate in multiple planes to fit the anatomy while also maintaining the integrity of the plate's novel locking mechanism. A highly effective tool when plating challenging condylar fractures or any case that may require unique contouring.

- Contouring of PAX reconstruction plates
- Bends plates in horizontal and vertical planes for complex surface geometry
- Protects polyaxial plate holes from deformation without the need to insert or remove threaded plugs

## Specialty plates

### 2.0mm locking A-A luxation plates

Width: 12.0mm

Thickness: 2.0mm

Part #	# Of holes	Length (mm)
090008	4	12
090006	4	14
090007	4	16



### 3.5mm locking TPO plates

Thickness: 3.0mm

Part #	# Of holes	Degrees	Side
044660	6	20	Left
044661	6	20	Right
045207	6	25	Left
045208	6	25	Right
044662	6	30	Left
044663	6	30	Right
045063	6	40	Left
045209	6	40	Right



### 3.5mm locking DPO plates

Thickness: 3.0mm

Part #	# Of holes	Degrees	Side
049108	7	20	Left
049109	7	20	Right
066000	7	25	Left
066001	7	25	Right
045570	7	30	Left
055059	7	30	Right
049122	7	40	Left
049123	7	40	Right



## 3.5mm locking DPO plates

Thickness: 2.5mm

Part #	# Of holes	Degrees	Side
066002	8	25	Left
066003	8	25	Right
090009	8	30	Left
090010	8	30	Right
066004	8	35	Left
066005	8	35	Right



## CCWO locking plates Cranial closing wedge osteotomy

Part #	Sizing	Head Width	Plate Thickness	Length (mm)
800275	2.4mm Left	12.4mm	2.3mm	34
800269	2.4mm Right	12.4mm	2.3mm	34
800276	2.7mm Left	18.25mm	2.5mm	45
800270	2.7mm Right	18.25mm	2.5mm	45
800277	3.5mm Left	22.4mm	3.7mm	57
800271	3.5mm Right	22.4mm	3.7mm	57



2.0mm locking limited contact lengthening plates (LP)

Width: 6.0mm  
Thickness: 1.5mm  
Distance between center of holes: 6.0mm

Part #	# Of holes	Distance between center holes (mm)	Length (mm)
066006	4	33	52
066007	6	30	64



2.4mm locking limited contact lengthening plates (LP)

Width: 8.0mm  
Thickness: 2.0mm  
Distance between center of holes: 7.5mm

Part #	# Of holes	Distance between center holes (mm)	Length (mm)
066008	6	22.5	64
066009	6	37.5	79
066010	6	52.5	94



2.7mm locking limited contact lengthening plates (LP)

Width: 8.5mm  
Thickness: 2.7mm  
Distance between center of holes: 9.0mm

Part #	# Of holes	Distance between center holes (mm)	Length (mm)
066011	6	27	75
066012	6	45	93
066013	6	63	111



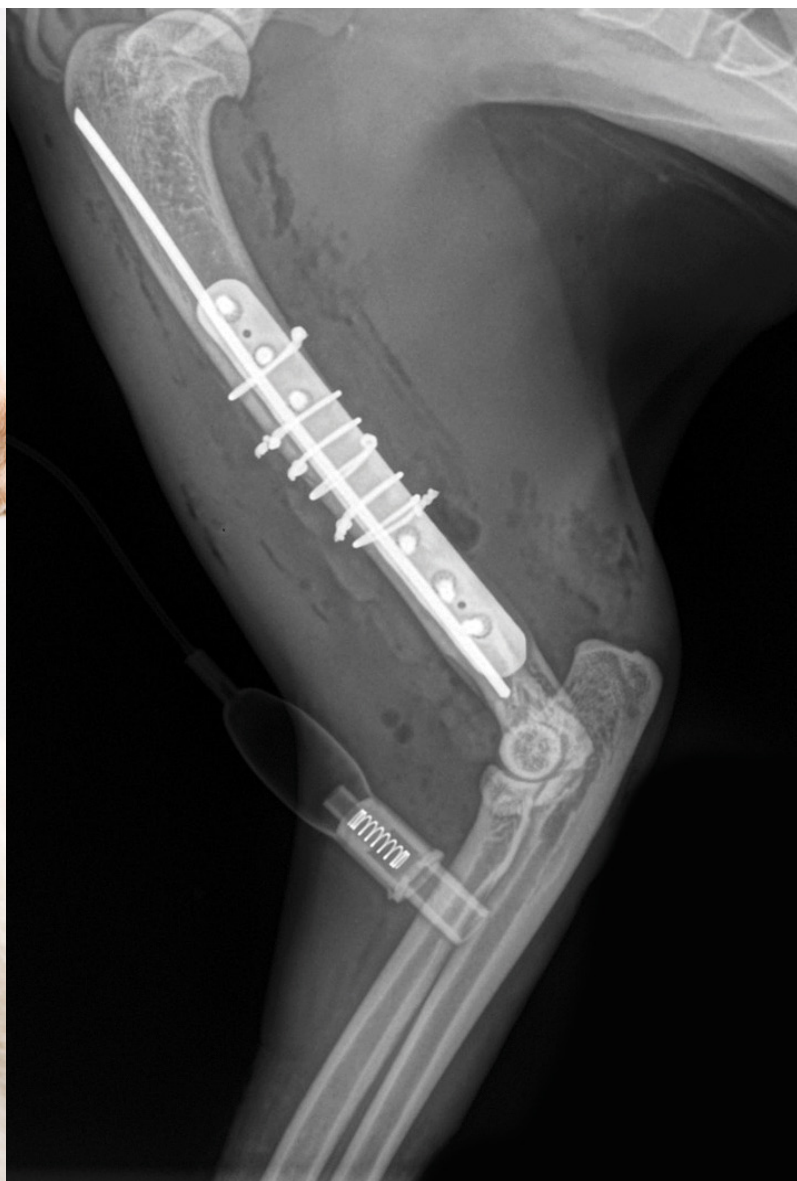
## 3.5mm locking limited contact lengthening plates (LP)

Width: 11.0mm

Thickness: 3.2mm

Distance between center of holes: 12.0mm

Part #	# Of holes	Distance between center holes (mm)	Length (mm)
066014	6	60	122
066015	6	84	146



# TPLO plates

## 2.0mm locking TPLO plates

Shaft width: 5.5mm  
Thickness: 2.3mm

Part #	# Of holes	Side
062804	5	Left
062805	5	Right



## 2.4mm locking TPLO plates

Shaft width: 6.5mm  
Thickness: 2.3mm

Part #	# Of holes	Side
062802	5	Left
062803	5	Right



## 2.7mm locking TPLO plates

Shaft width: 9.5mm  
Thickness: 2.5mm

Part #	# Of holes	Side
062800	5	Left
062801	5	Right



## 3.5mm locking TPLO plates

Shaft width: 11.0mm

Thickness: 3.7mm

Part #	# Of holes	Side
062518	6	Left
062519	6	Right



## 3.5mm broad locking TPLO plates

Shaft width: 13.5mm

Thickness: 3.7mm

Part #	# Of holes	Side
062879	8	Left
062880	8	Right



## PAX TPLO plate tray

Part #	Description
062680	PAX TPLO tray 2.0/2.4/2.7/3.5/3.5mm broad
062727	PAX TPLO tray cover

Implants and instruments are not included with tray.



## PAX instrument full tray

Part #	Description
066073	PAX instrument full tray 2.0/2.4/2.7/3.5mm
066092	PAX instrument full tray cover

Instruments are not included with tray.





# TPLO plate kits and trays

## Suggested PAX TPLO Starter Kit

Part #	Description
043932	Castroviejo caliper, 3.5" curved
042437	TPLO Jig (Stainless steel)
371497	TPLO Jig (Aluminum)
029529	QC handle, straight
029528	Large QC Handle (pear-shaped)
042353	T15 stardrive screwdriver, shaft, for 2.7 & 3.5mm PAX screws
042354	PAX drill guide 2.0/2.5mm (for 2.7/3.5mm screws)
051988	2.7mm PAX neutral/load drill guide
051989	3.5mm PAX neutral/load drill guide
042389	PAX plate holding forceps
042170	Stifle retractor, 7"
035820	Side pin cutter
029061	1/8" x 9" smooth IM pin
029057	1/16" x 9" smooth IM pin
029010	2.0mm QC drill bit for PAX 2.7mm screws
029011	2.5mm QC drill bit for PAX 3.5mm screws
042355	2.7/3.5mm PAX depth gauge
090011	2.7/3.5mm PAX screw rack
051948	2.7/3.5mm PAX half tray cover
051702	2.7/3.5mm PAX instrument tray
042352	PAX tray cover, pack of 2 (halves)
062680	PAX TPLO tray
062727	TPLO tray cover
	PAX TPLO plate, 2.7mm left & right, 2 ea
	PAX TPLO plate, 3.5mm left & right, 2 ea
	PAX TPLO plate, 3.5mm left & right, (broad) 2 ea
	2.7mm screws, 10–40mm, 5 ea
	3.5mm screws, 12–56mm, 5 ea

## Features and benefits

- Polyaxial locking titanium alloy plates and screws for supreme biocompatibility
- Proximocaudal curve to optimize plate alignment and screw purchase
- Crescent head to accommodate high tibial osteotomies
- Anatomic precontour generated from 100-plus canine patients
- 32-month research and development initiative
- Autoclavable organizer tray for plates and forceps





## OrthoHelp Support

Securos customers please use the OrthoHelp form on [securos.com](https://securos.com) to contact us with questions regarding specific pre- or post-surgical cases. We will review of all the information (including radiographs supplied by the surgeon) to make our best surgical recommendations.



Radiographs by  
Prof. Filippo Martini DVM

## PAX reference charts

Screw size	Drill bit	Drill bit item #	Screwdriver shaft type	Screwdriver item #	Depth gauge item #
1.5mm	1.1mm	029008 (QC) 028993 (JC)	T6	042387	042392
2.0mm	1.5mm	029009 (QC) 028994 (JC)	T6	042387	042392
2.4mm	1.8mm	115706 (QC) 115707 (JC)	T6	042387	042392
2.7mm	2.0mm	029010 (QC) 028995 (JC)	T15	042353	042355
3.5mm	2.5mm	029011 (QC) 028996 (JC)	T15	042353	042355

### Suggested applications for PAX plates

Plate Type	Possible uses
Reconstruction Plates	<ul style="list-style-type: none"> <li>• Maxillofacial fractures</li> <li>• Condylar fractures</li> </ul>
Limited Contact Plates	<ul style="list-style-type: none"> <li>• Long bone fractures</li> <li>• Weight-bearing bones</li> </ul>
T-Plates	<ul style="list-style-type: none"> <li>• Distal radius</li> </ul>
Lengthening Plates	<ul style="list-style-type: none"> <li>• Highly comminuted long bone fractures</li> <li>• Uses where anatomical reconstruction not possible</li> </ul>



